

ASN Clinical Briefing

Welcome to the **ASN Clinical Briefing**, a monthly newsletter highlighting clinical leadership, resources, and key developments in kidney health. The **ASN Excellence in Patient Care (EPC)** team delivers timely updates, resources, and opportunities to help you advance your clinical care.

Please contact epc@asn-online.org with comments, questions, or suggestions to strengthen this newsletter.

KIDNEY HEALTH

AKINow

- For the third year, ASN will provide funding for 10 travel awards for fellows to attend the University of Alabama at Birmingham Continuous Renal Replacement Therapy (UAB CRRT) Academy. Applications will open on June 9 and close on July 20.
[Visit this site for updates and the application](#)

INFECTION PREVENTION

Current and Emerging Threats (CET)

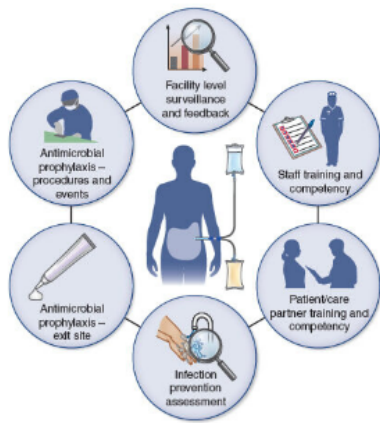
- CET monitors current and emerging bacterial, viral, and fungal threats which impact immunocompromised individuals with chronic kidney disease.
- View current resources for measles:
 - CET resource: [Measles FAQ for People with Kidney Diseases](#)
 - Trusted resource: [Johns Hopkins Measles Tracker](#)
- An FAQ on Hantavirus is being developed. Watch for this new resource on [the CET site](#)

The Kidney Community Vaccination Collaborative (KCVC)

- Vaccination for people with kidney diseases is a year-round public health service, particularly with COVID now a perennial concern. View trusted resources for vaccination on the [KCVC website](#).

The Infection Prevention & Transitions of Care Podcast Series

- [Listen to the latest episode](#) featuring host Dr. Tushar Chopra speaking with guest Dr. Jeffrey Perl about PD Core Interventions for Infection Prevention.



Graphic representation of the PD Core Interventions for Infection Prevention

Peritoneal Dialysis (PD) Core Interventions for Infection Prevention

Join ASN and ISPD-NAC for a Journal Club event on June 16 to discuss the [Core Interventions for the Prevention of Peritoneal Dialysis-Related Infections](#), Published in CJASN.

Register for the Journal Club

Visit ASN's new Core Interventions for the Prevention of PD-Related Infections webpage to learn more. [Visit new website](#)

HUMANITARIAN EFFORTS

Resources for Displaced Patients

- Displaced persons include people living with kidney failure who are at risk of being detained and people experiencing displacement due to other circumstances.
 - [Read EPC's FAQs, which emphasize the need for life-saving therapies and medications](#)
 - Download emergency cards for [dialysis](#) and [kidney transplant](#) patients

Sustainability

- Sustainability initiatives can save your facility both resources and funds. EPC's Sustainability Program Committee supports the work of ISN's GREEN-K initiative [Learn more about GREEN-K](#)

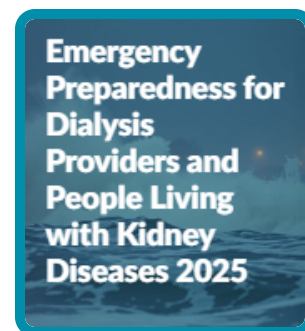
Emergency Preparedness and Response (EPR) Podcast Series

- Part 2 of the latest EPR podcast episode, featuring Dr. Matthew Arduino and addressing "Water Quality, Dialysis, and Infectious Risk During Emergencies," is now available. [Access part 1](#) / [Listen to part 2](#)

Hurricane season begins June 1

Prepare now by:

- accessing EPR's online module, "[Emergency Preparedness for Dialysis Providers and People Living with Kidney Diseases](#)" and
- downloading emergency cards for [dialysis](#) and [kidney transplant](#) patients



LEADERSHIP

Fostering Innovative Leaders in Nephrology and Dialysis (FIND)

- FIND Applications for the class of 2027 opens on June 1 and will close on June 30, 2026
- Know a nephrology professional with less than 10 years of experience (e.g., nephrologists, fellows, researchers, APP's) who would benefit from participating in the FIND Leadership Program? [Submit a nomination form](#)
- [Learn more about the FIND Leadership program](#)

RESOURCE HUB

Transforming Dialysis Access Together (TDAT)

- [View videos](#) on the importance of vascular access and identifying vascular access type.

Glomerular Diseases Collaborative (GD-C)

The Glomerular Disease (GD) Compendium is an open-access, online resource hub designed to support nephrology professionals and the broader medical community caring for people living with glomerular diseases.

[Access the GD-C Compendium](#)



Current chapters include:

- Recognition to Referral
- Navigating Access to Treatment
- ANCA Vasculitis
- IgA Nephropathy, and
- Lupus Nephritis

UPCOMING EVENTS AND HOW TO GET INVOLVED

Centers of Excellence in Home Dialysis (CoE)

- **Community feedback requested:** The Steering Committee is seeking feedback on the proposed CoE in Home Dialysis application process. Programs are invited to share input by completing this [Expression of Interest form](#). Responses will help inform development of the future CoE designation application and identify programs interested in participating in a pilot application process.

ASN Home Dialysis Scholarship Program

- The ASN Home Dialysis Scholarship Program for fellows is accepting applications for the 2026/27 cohort. Applications will close on May 31, 2026. [Apply now](#)

ASN Excellence in Patient Care (EPC) strives to enhance kidney health by promoting prevention, early detection, timely intervention, and effective treatment.

To learn more, please visit www.epc.asn-online.org



Excellence in Patient Care (EPC) | 1401 H Street, NW Suite 900 | Washington, DC 20005 US

[Unsubscribe](#) | [Our Privacy Policy](#) | [Constant Contact Data Notice](#)