

ASN Clinical Briefing

Welcome to the **ASN Clinical Briefing**, a monthly newsletter highlighting clinical leadership, resources, and key developments in kidney health.

The **ASN Excellence in Patient Care (EPC)** team delivers timely updates, resources, and opportunities to help you advance your clinical care.

Please contact epc@asn-online.org with comments, questions, or suggestions to strengthen this newsletter.

KIDNEY HEALTH

AKINow

- For the third year, ASN will provide funding for 10 travel awards for fellows to attend the University of Alabama at Birmingham Continuous Renal Replacement Therapy (UAB CRRT) Academy. Applications are open from June 9 through July 20, 2026.

[Apply today](#)

INFECTION PREVENTION

Current and Emerging Threats (CET)

- CET works to continuously improve the safety of life sustaining dialysis, specifically in the area of current and emerging bacterial, viral, and fungal threats which impact immunocompromised individuals with chronic kidney disease.
- CET is monitoring the recent outbreaks of Ebola, Hantavirus, and measles. Resources available on the [CET website](#) include:

- [ASN Ebola Informational Bulletin](#)
- [WHO Hantavirus 2026 Update](#)
- CET resource: [Measles FAQ for People with Kidney Diseases](#)
- Trusted resource: [Johns Hopkins Measles Tracker](#)



The Infection Prevention & Transitions of Care Podcast Series

- [Listen to the latest episode](#) featuring host Dr. Tushar Chopra speaking with guest Dr. Jeffrey Perl about **PD Core Interventions for Infection Prevention**.

Peritoneal Dialysis (PD) Core Interventions for Infection Prevention

The ASN and ISPD-NAC hosted a Journal Club event on June 16 to discuss the the intervention "Standardized patient and care partner/giver training and assessment of competency". This intervention was featured in the article [Core Interventions for the Prevention of Peritoneal Dialysis-Related Infections](#), published in CJASN.



Visit ASN's new Core Interventions for the Prevention of PD-Related Infections webpage to [view the Journal Club recording](#). The recording will be available a few days after the live event.

HUMANITARIAN EFFORTS

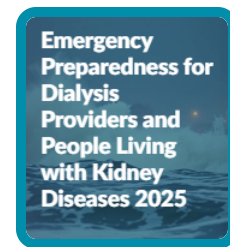
Resources for Detained or Displaced Individuals

- The following educational materials are available for healthcare facilities to support people living with kidney failure who are at risk of being detained or experiencing housing displacement.
 - [Read EPC's FAQs, which emphasize the need for life-saving therapies and medications](#)
 - Download emergency cards for [dialysis](#) and [kidney transplant](#) patients

Hurricane season is June 1 through November 30

Prepare by:

- Accessing EPR's online module, "[Emergency Preparedness for Dialysis Providers and People Living with Kidney Diseases](#)" and
- Downloading emergency cards for [dialysis](#) and [kidney transplant](#) patients



LEADERSHIP

Fostering Innovative Leaders in Nephrology and Dialysis (FIND)

- The FIND Leadership Program is accepting applications for the Class of 2027 through June 30, 2026!
- Know a nephrology professional with fewer than 10 years of experience, including nephrologists, fellows, researchers, or advanced practice providers (APPs), who would benefit from the FIND Leadership Program? [Submit your nomination today and help shape the next generation of kidney health leaders!](#)

RESOURCE HUB

Transforming Dialysis Access Together (TDAT)

- The TDAT Medical Training Workgroup, using ACGME as a foundational framework, developed the Dialysis Access Training Recommendations for Nephrology Fellows [View the CJASN article](#)

Sustainability

- Sustainability initiatives can save your facility both resources and funds. EPC's Sustainability Program Committee supports the work of ISN's GREEN-K initiative [Learn more about GREEN-K](#)

The Kidney Community Vaccination Collaborative (KCVC)

- Vaccination for people with kidney diseases is a year-round public health service, particularly with COVID now a perennial concern. View trusted resources for vaccination on the [KCVC website](#).

Glomerular Diseases Collaborative (GD-C)

The Glomerular Disease (GD) Compendium is an open-access, online resource hub designed to support nephrology professionals and the broader medical community caring for people living with glomerular diseases. [Access the GD-C Compendium](#)

Current chapters include:

- Recognition to Referral
- Navigating Access to Treatment
- ANCA Vasculitis
- IgA Nephropathy, and
- Lupus Nephritis

Emergency Preparedness and Response (EPR)

Podcast Series

Part 2 of the latest EPR podcast episode, featuring Dr. Matthew Arduino and addressing “**Water Quality, Dialysis, and Infectious Risk During Emergencies**,” is now available.

[Access part 1](#) / [Listen to part 2](#)



UPCOMING EVENTS AND HOW TO GET INVOLVED

Centers of Excellence in Home Dialysis (CoE)

- **Reminder: Expression of Interest form due June 18:** The Steering Committee is seeking feedback on the proposed CoE in Home Dialysis application process. Programs are invited to share input by completing this [Expression of Interest form](#). Responses will help inform development of the future CoE designation application and identify programs interested in participating in a pilot application process.

Do you know someone who may wish to receive this monthly newsletter?

[Share this link to join the mailing list](#)

ASN Excellence in Patient Care (EPC) strives to enhance kidney health by promoting prevention, early detection, timely intervention, and effective treatment.

To learn more, please visit www.epc.asn-online.org



Excellence in Patient Care (EPC) | 1401 H Street, NW Suite 900 | Washington, DC 20005 US

[Unsubscribe](#) | [Our Privacy Policy](#) | [Constant Contact Data Notice](#)